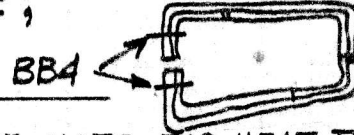


PREPARED	NAME L. Pazmany	5-10-80	PAZMANY AIRCRAFT CORPORATION — SAN DIEGO — CALIFORNIA —	MODEL NO.	PL-2
CHECKED			ENGINEERING CHANGE NOTICE # 5	REPORT NO.	
APPROVED				PAGE NO.	

DWG 2-30-005 - TO THE RIGHT OF SEC A-A, DELETE: "PICK UP INSIDE STRAP"
 CHANGE BJ-4 RIVETS TO BB-4 RIVETS THROUGH FLANGE OF -9 AND
 ANGLE -27. ON TOP OF TITLE BLOCK,
 CHANGE BJ-4 RIVETS TO BB-4



DWG 2-50-003 - -39 PLUNGER - CHANGE NOTE FOR HEAT TREATMENT
 TO: HEAT TREAT TO 140,000 PSI

DWG 2-30-001 - SOME OF THE SKIN SIZES IN THE B/M ARE TOO SMALL
 FOR EASY FITTING. INCREASE STOCK SIZES AS FOLLOWS:

-109 & -110 - 23.0 x 70.0 ; -111 - 15.0 x 50
 -115 - 16.0 x 62.0 ; -189 - 17.5 x 101.0

DWG-2-70-003 - AD 12 x AN365-B32 NUT TO B/M

DWG-2-40-004 - SECT. A-A - CHANGE HOLE TO .2500^{±.0020}/_{.0030} ON -51

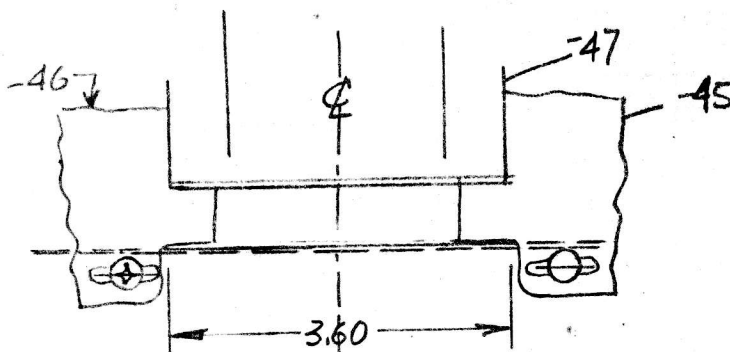
DWG-2-80-001 - BATTERY DRAIN IN BOTTOM SKIN. GROMMET SHOULD BE
 AN 931-6-10 - ALSO CHANGE IN B/M.

DWG-2-30-004 - THE 3/8 x .025 NEOPRENE TUBE SEAL IS TOO STIFF,
 USE 3/8" DIA (STICKY-BACK) HOUSEHOLD FOAM WEATHER SEAL (FOR DOORS)

DWG-2-40-010 - TWO ELBOWS CONNECTING TO ELECTRIC FUEL PUMP SHOULD
 BE MS 20822-6-2D INSTEAD OF MS 20822-6D. ELBOW CONNECTING
 TO THE BOTTOM PORT OF THE FOUR WAY VALVE SHOULD BE MS 20822-6D.

DWG 2-10-011 - SHT1 - VIEW D-D

MODIFY -45 & -46 TO
 CLEAR THE FUEL PUMP
 BOX AS SHOWN. MOVE
 TWO NUTPLATES OUTBOARD



NOTE: THESE MISTAKES WERE REPORTED BY JACK LOUGH (PL-2 #15)
 FROM KITCHENER, ONTARIO, CANADA - THANK YOU VERY MUCH.

L. Pazmany