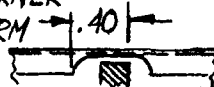


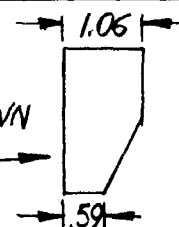
PREPARED	NAME L. Pazmany	Mar. 1975	PAZMANY AIRCRAFT CORPORATION — SAN DIEGO — CALIFORNIA —	MODEL NO.	PL-4A
CHECKED			ENGINEERING CHANGE NOTICE # 5	REPORT NO.	
APPROVED				PAGE NO.	

DWG 10-004 - AILERON - LEFT HAND - BOTTOM CORNER  
DETAIL OF -7 SPAR, CUTOUT FOR MASS BALANCE ARM  
CHANGE DIMENSION .45 TO .40



DETAIL -15

CHANGE TWO DIMENSIONS AS SHOWN

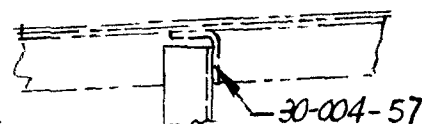


DWG 10-005 - SPAR ASSY. WING OUTBD. PANEL :  
NOTE INDICATING RIVETS ATTACHING RIBS TO WEB. CHANGE  
MD 419 TO 424. JUST ABOVE THIS NOTE IS SHOWN "MD 424 TYP".

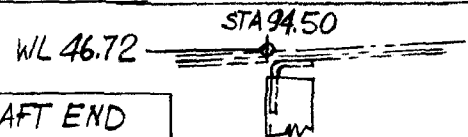
DWG 10-007 - REAR SPAR - WING. DETAIL -39. CHANGE LENGTH TO 2.38 AND DIMENSION  
1.15 TO 1.19. (TUBE FITS INSIDE .69 DIA. HOLES IN -33 AND -35). CHANGE STOCK TO 2.4".

DWG 30-002 - FIREWALL ; IN B/M. 212-12N RECEPTACLE - CHANGE REQ. TO 6.  
NAS 697-A08K NUTPLATE - CHANGE REQ. TO: 19 FOR -3 AND 20 FOR -1

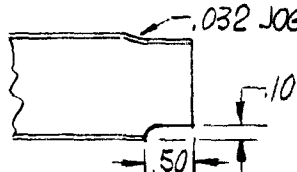
DWG 30-003 - LANDING GEAR BEAM ASSY. JUST UNDER  
SECTION B-B. CLIP ATTACHING -27 CHANNEL TO COCKPIT  
LONGERON IS SHOWN WITH FLANGE FACING AFT. SHOULD BE  
FACING FORWARD AS SHOWN IN DWG 30-004



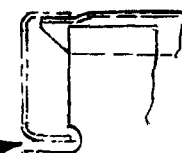
DWG 30-004 - COCKPIT LONGERON. FRAME STA 94.50 ASSY  
ADD: WL 46.72 AT INTERSECTION WITH LONGERON



DWG 30-006 - BAGGAGE COMPART. FLOOR. ADD DETAIL OF AFT END  
OF -43 AS SHOWN IN SKETCH.

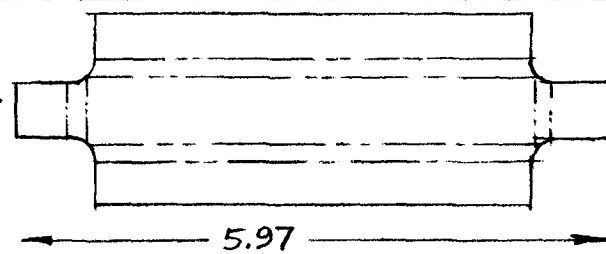
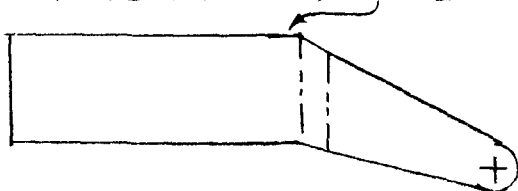


ON -3 FLOOR ASSY. THE RIGHT SIDE EDGE  
MEMBER IS SHOWN AS -7, SHOULD BE -61  
AT LEFT SIDE EDGE. (STA 85.79). CUT OUT  
FOR CHANNEL 30-005-17 SHOULD BE AS SHOWN



DWG 30-007 - TAIL CONE FRAMES. IN B/M. -53/-54 : STOCK SIZE SHOULD BE: 8.5x1.5x.032  
IN B/M -45/-46 CLIP, REQ. SHOULD BE 2/2

DWG 50-004 - RUDDER CONTROL.  
THE BLANK FOR -11 AS SHOWN IS TOO SHORT.  
INCREASE LENGTH AS SHOWN IN SKETCH  
ELIMINATE THE UPPER FLANGE OF -21



DWG 50-002 - ELEVATOR TRIM CONTROL  
IN B/M -25 STOCK SIZE. SHOULD BE L=1.4

CONSTRUCTION MANUAL. PAGE 51. 3 LINES FROM BOTTOM: SHOULD READ: GUSSET -27

SHEET UTILIZATION DIAGRAM. PAGE 10. DELETE 30-001-17 FROM 2024-T3 -.020 SHEET  
AD TO 2024-T3 -.032 SHEET IN PAGE 13

DWG 20-001 - STABILATOR. IN B/M. -63 ANGLE. STOCK SIZE SHOULD BE 1.2x3.1

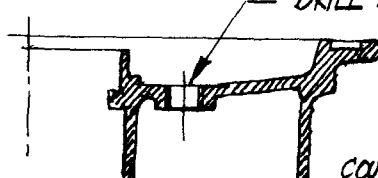
SUMMARY OF RAW MATLS. PAGE 3. ITEM 78. TUBE - NYLON. 3/16" O.D. x .039. LENGTH SHOULD BE 10 FT.

EXPLODED VIEWS. DWG 20-003  
RUDDER



DWG. 60-001 - WHEEL REWORK

— DRILL AND TAP 6 HOLES - 1/4" - 20



ALSO. IN "REWORK OF BRAKE  
DISC ADAPTER", NOTE SHOULD BE:  
COUNTERSUNK TO MATCH AN505-416 (82°)