

PREPARED	NAM. L. Pazmany	SEP. 1994	PAZMANY AIRCRAFT CORPORATION — SAN DIEGO — CALIFORNIA —	MODEL NO.	PL-9
CHECKED			ENGINEERING CHANGE NOTICE 1	REPORT NO.	
APPROVED				PAGE NO.	1

SUMMARY OF RAW MATERIALS:

PAGE 1 - TUBE. 4130 N. 5/16 O.D. x .065 - CHANGE TO 5/16 O.D. x .058

PAGE 3 - BAR. 2024-T4. 375 x .100 - DELETE

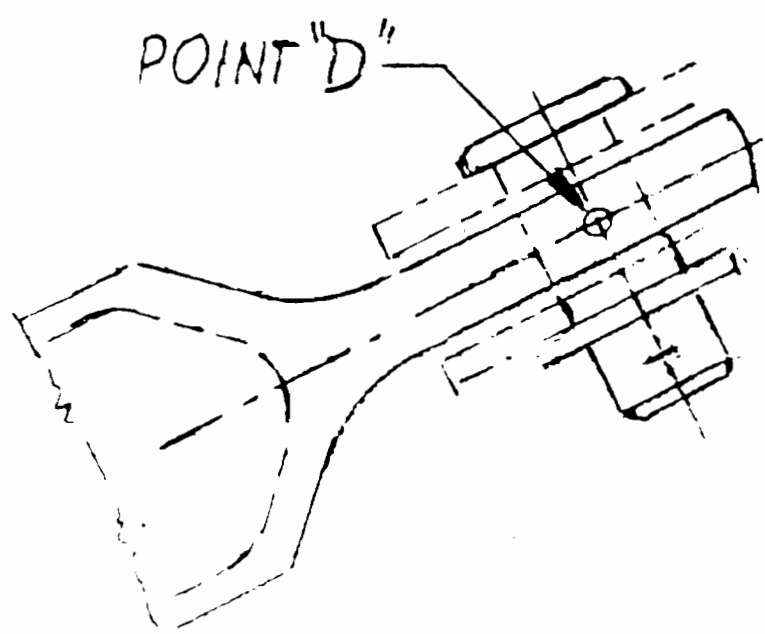
PAGE 3 - PLATE. 6061-T6. 250 x 30.0 x 15.0 - CHANGE TO 2024-T3/T4. 250 x 24.0 x 48.0

PAGE 3 - SHEET. 2024-T3. 040 x 12.0 x 86.0 AND 6061-T6. 040 x 48 x 96 - 4.5 SHEET. CHANGE TO SHEET. 2024-T3. 040 x 48 x 96 - 5 SHEETS.

PAGE 3 - PLATE .190 x 12 x 4. 6061-T6 - CHANGE TO 2024-T3

NOTE: 6061-T6 CAN BE REPLACED BY 2024-T3 - BUT 2024-T3 CAN NOT BE REPLACED BY 6061-T6 UNLESS SPECIFIED.

DWG. 9-10-006 - ZONE 5-A.



DWG 9-10-002 SHT. 1

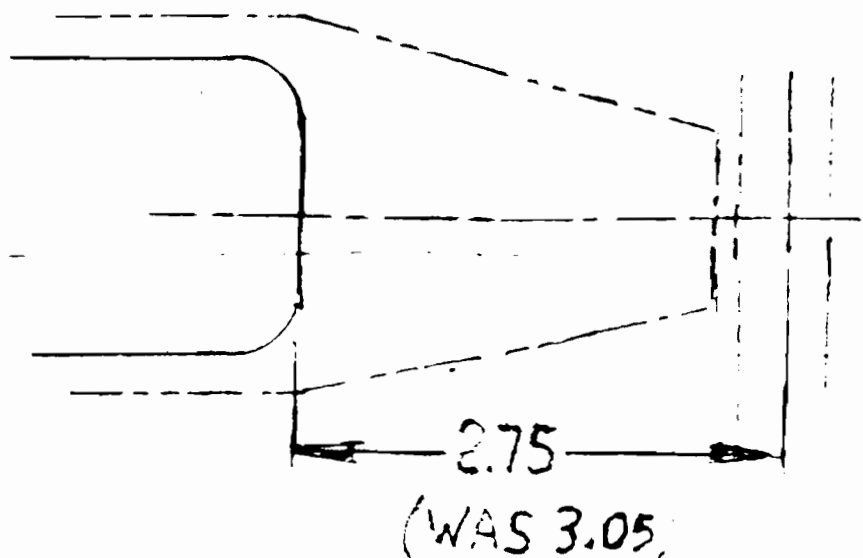
ZONE 4-B "FRONT SPAR ASSY. 9-10-004-1" → ADD
 ZONE 4-C "REAR SPAR ASSY - 9-10-004-3" → ADD

B/M. -43, -45, -47. CABLE 1/8" - 7x7 SHOULD BE 7x19

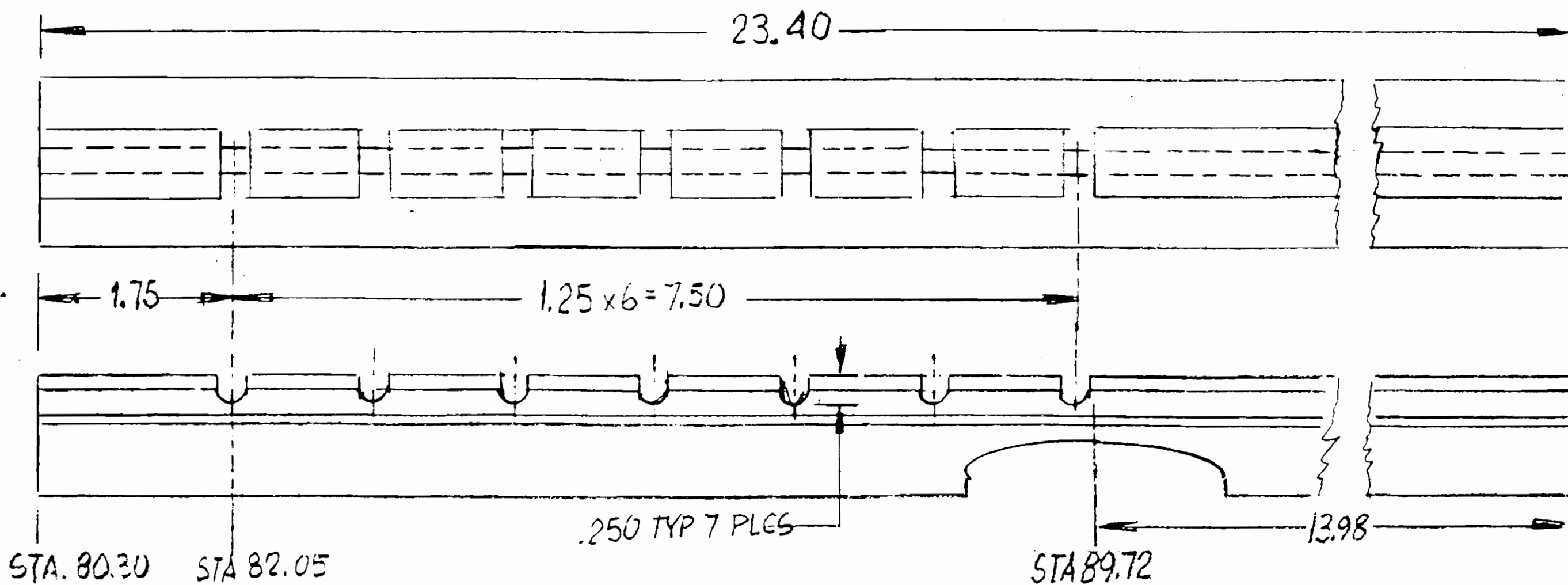
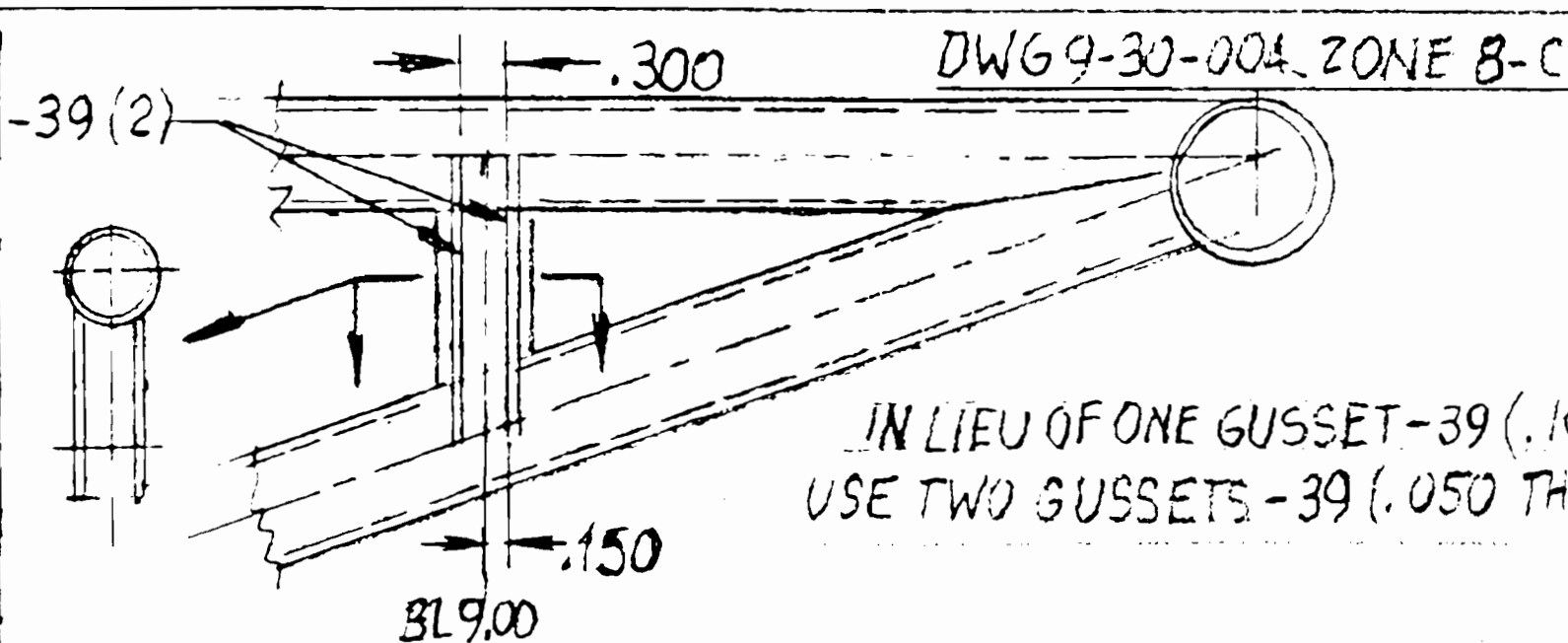
DWG 9-50-002 -

B/M-25, -27 - CABLE 1/8" - 7x7 SHOULD BE 7x19

ZONE 5-D - 254-27. CABLE 1/8" - 7x7 SHOULD BE 7x19



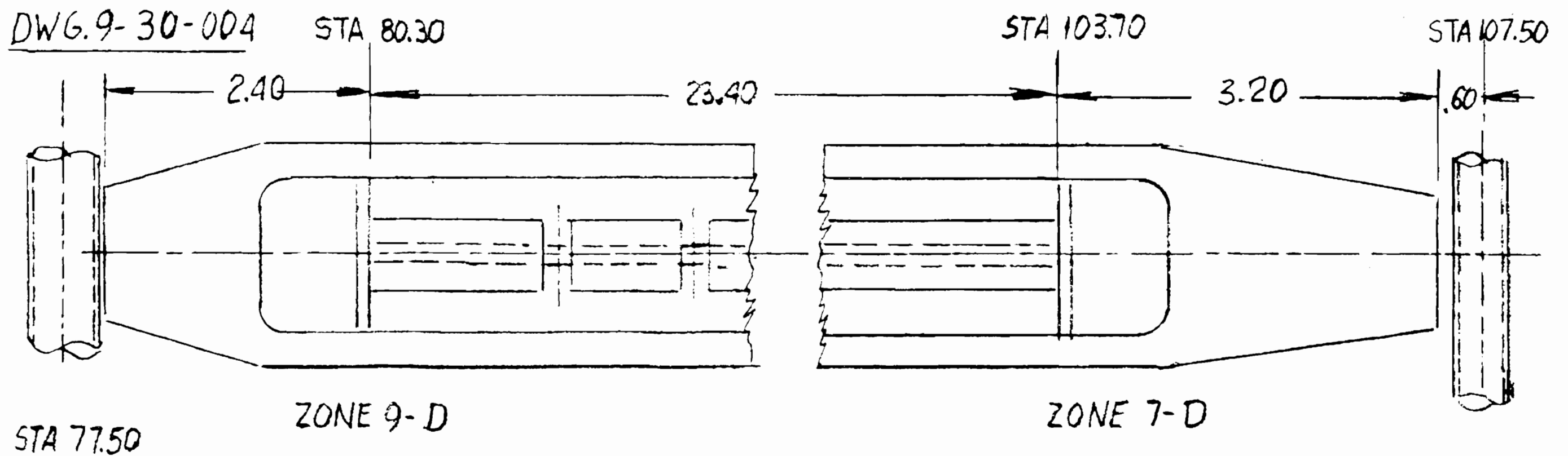
DWG 9-30-009 - ZONE 6-B. CHANGE DIMENS



DETAIL OF MACHINING OF SEAT RAIL EXTRUSION - 23

DWG 9-30-004. ZONE 1-C

PREPARED	NAME L. Pazmany	SEP. 1994	PAZMANY AIRCRAFT CORPORATION — SAN DIEGO — CALIFORNIA —	MODEL NO.	PL-9
CHECKED			ENGINEERING CHANGE NOTICE 1	REPORT NO.	
APPROVED				PAGE NO.	2



DWG 9-10-002 - SHT 1. IN B/M ADD -58 AND -60

IN B/M FOR -95, -96: WIDTH WAS 20.5 - CHANGE TO 11.5

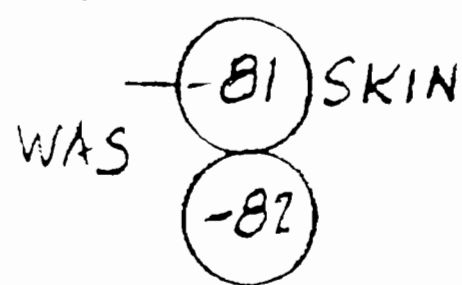
FOR -97, -98: WIDTH WAS 20.5 - CHANGE TO 11.5

FOR -99, -100: WIDTH WAS 11.5 - CHANGE TO 20.5

FOR -101, -102: WIDTH WAS 11.5 - CHANGE TO 19.5

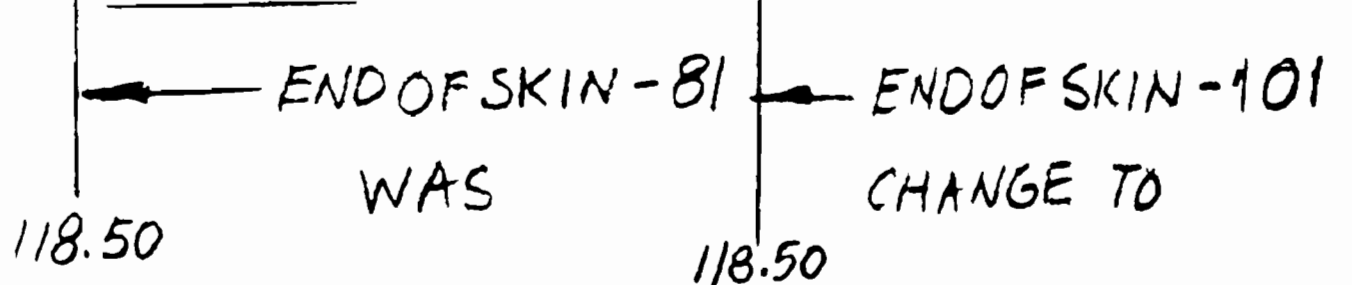
DELETE -102. INCREASE REQMT FOR -101 TO *2" (LEFT AND RIGHT SKINS ARE THE SAME)

ZONE 3-B



CHANGE TO: (-101)

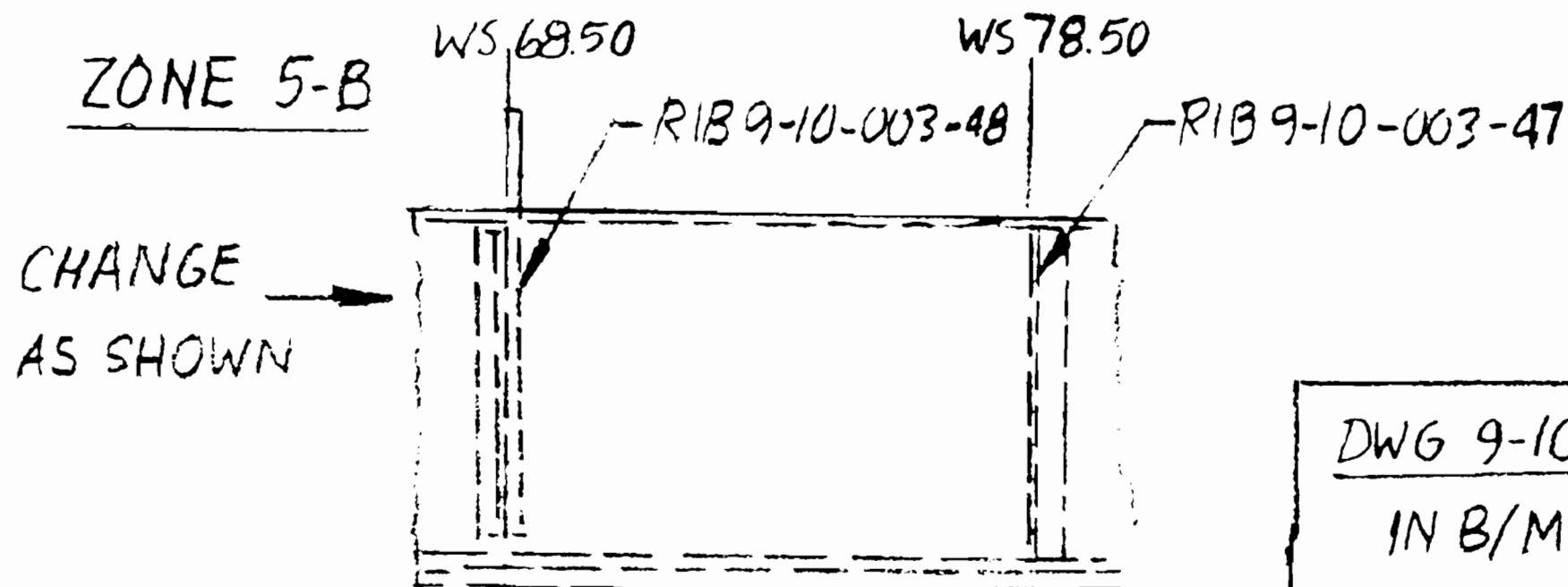
ZONE 4-B



IN B/M - FOR -89, -90 - STOCK SIZE WAS: 27.7 x 9.2 x .040 - CHANGE TO 8.0 x 7.6 x .040

- FOR -129, -130 - DESCRIPTION WAS: ANGLE - CHANGE TO CHANNEL

ZONE 5-B



IN B/M - AD AS SHOWN BELOW (ZONE 2-C)
(ALSO AD TO THE SUMMARY OF RAW MATERIALS)

QTY	PART NO	DESCRIPTION
5	5 NAS 77-6-35	BUSHING
5	5 AN 364-428	NUT
10	10 AN 960-616	WASHER
5	5 AN 960-416	WASHER
5	5 AN 4-12A	BOLT

DWG 9-10-003

IN B/M - AD: AN 316-7 CHECK NUT
QTY.: 2

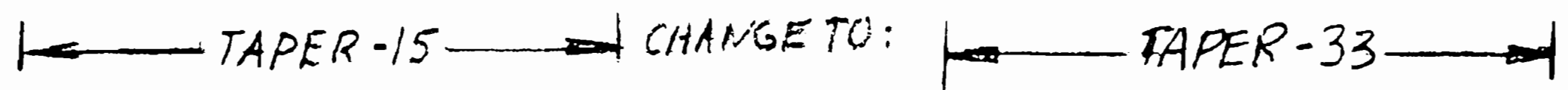
UNDER DETAIL -69 SPACER -ZONE 3-D
AD THE FOLLOWING NOTE:

"USED ALSO IN DWG. 10-002 SHT. 1
SEE QUANTITIES IN B/M -ZONE 2-C

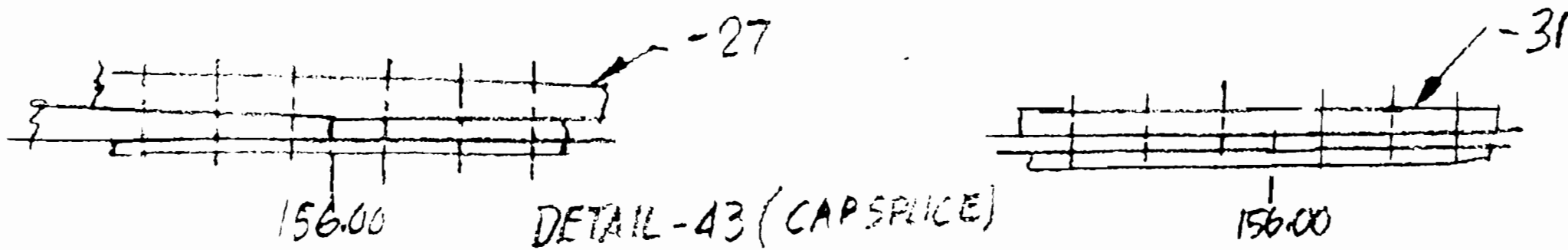
IN B/M - FOR -115 SKIN, CHANGE
TO -115 BOTTOM SKIN

PREPARED	NAME L. Pazmany	OCT 1994	PAZMANY AIRCRAFT CORPORATION — SAN DIEGO — CALIFORNIA —	MODEL NO. PL-9
CHECKED			ENGINEERING CHANGE NOTICE 1	REPORT NO.
APPROVED				PAGE NO. 3

DWG 9-10-004 ZONE 3-D. TO DIMENSION 67.50 CHANNEL, ADD (-11)

ZONE 4-D. 

ZONE 4-C AD FOR REFERENCE:

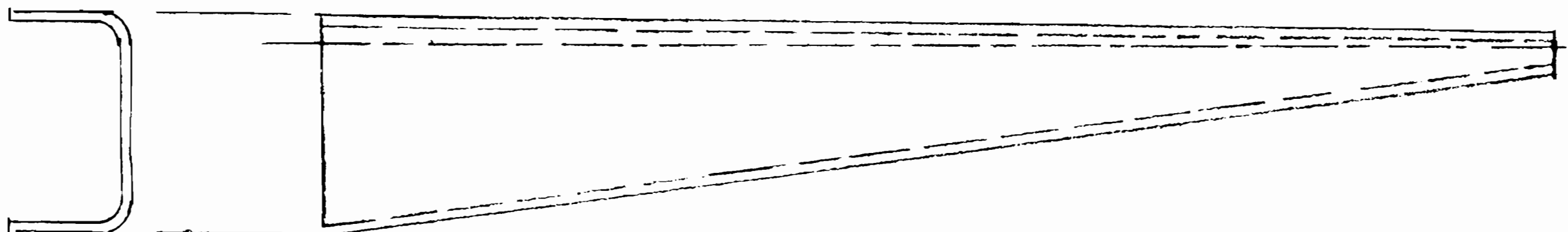


ZONE 5-B - FLAT PATTERN -61 CHANGE TO: FLAT PATTERN -61 & -59


B/M. CHANGE QTY. AS SHOWN

11	9	4	-64	RIB
11	9	4	-63	RIB


DWG 9-10-007. ZONE 1-B



ADD FULL SIZE DETAIL OF AILERON TRAILING EDGE.

 AILERON TRAILING EDGE

DWG 9-10-005 B/M

 OPP.

1	9-10-007-4	AILERON FAIRING ASSY
1	9-10-007-3	AILERON FAIRING ASSY
1	9-10-007-36	TRAILING EDGE
1	9-10-007-35	TRAILING EDGE

ZONE 4-D - DELETE: -51 TIP

ADD 9-10-007-3 & -4

ZONE 6-D - DELETE: -49 TRAILING EDGE

ADD: 9-10-007-35 TRAILING EDGE

9-10-007-36 OPP



PREPARED	NAME L. Pazmany	SEP. 1994	PAZMANY AIRCRAFT CORPORATION — SAN DIEGO — CALIFORNIA —	MODEL NO.	PL-9
CHECKED			ENGINEERING CHANGE NOTICE 1	REPORT NO.	
APPROVED				PAGE NO.	4

SUMMARY OF RAW MATERIALS:

PAGE 1. TUBE. 4130 N. 5/16 O.D. x .065 - CHANGE TO 5/16 O.D. x .058

PAGE 3. BAR. 2024-T4. 375 x .106 - DELETE

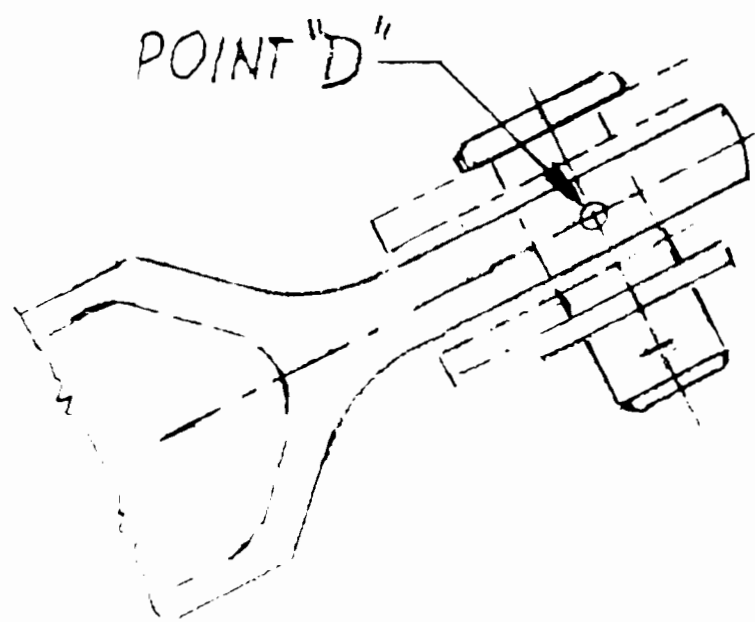
PAGE 3. PLATE. 6061-T6. 250 x 30.0 x 15.0 - CHANGE TO 2024-T3/T4. 250 x 24.0 x 48.0

PAGE 3 - SHEET. 2024-T3. 040 x 12.0 x 86.0 AND 6061-T6. 040 x 48 x 96 - 4.5 SHEET. CHANGE TO SHEET 2024-T3. 040 x 48 x 96 - 5 SHEETS.

PAGE 3 - PLATE .190 x 12 x 4. 6061-T6 - CHANGE TO 2024-T3

NOTE: 6061-T6 CAN BE REPLACED BY 2024-T3 - BUT 2024-T3 CAN NOT BE REPLACED BY 6061-T6 UNLESS SPECIFIED.

DWG. 9-10-006 - ZONE 5-A.



DWG 9-10-002 SHT. 1

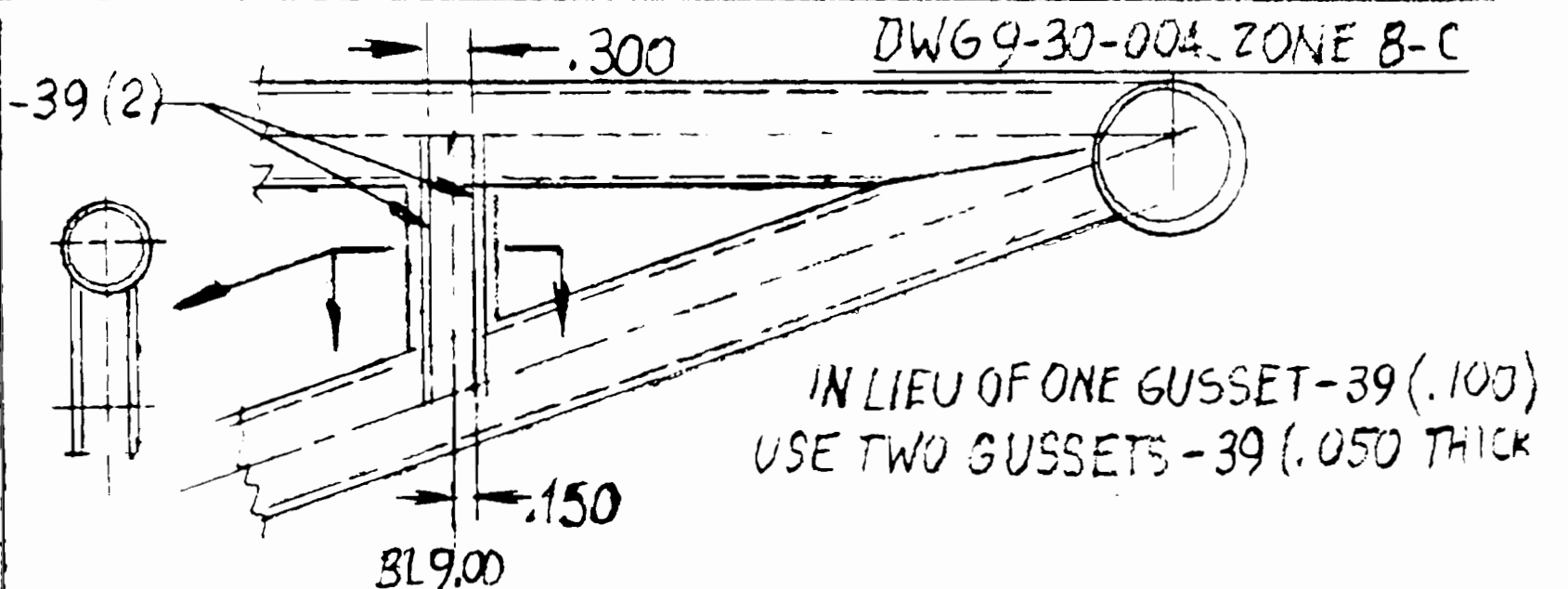
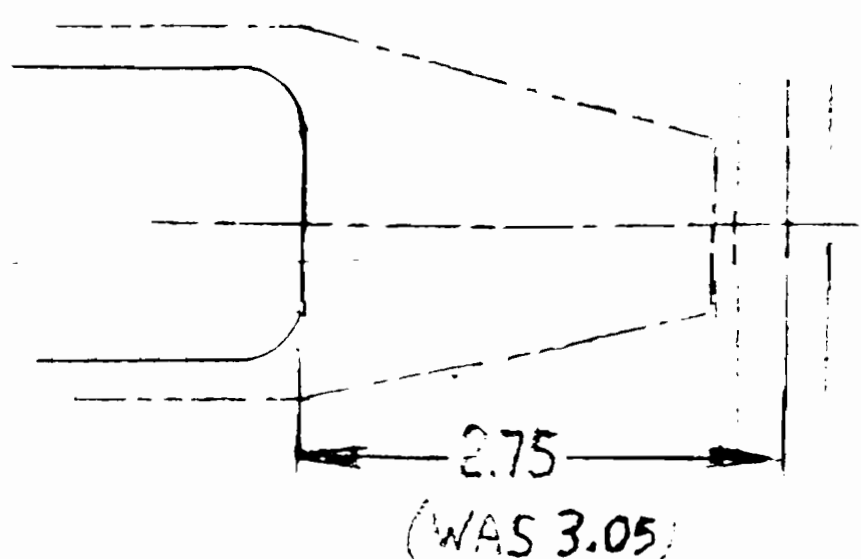
ZONE 4-B "FRONT SPAR ASSY. 9-10-004-1" → ADD
ZONE 4-C "REAR SPAR ASSY - 9-10-004-3" → ADD

B/M. -43, -45, -47. CABLE 1/8" - 7x7 SHOULD BE 7x19

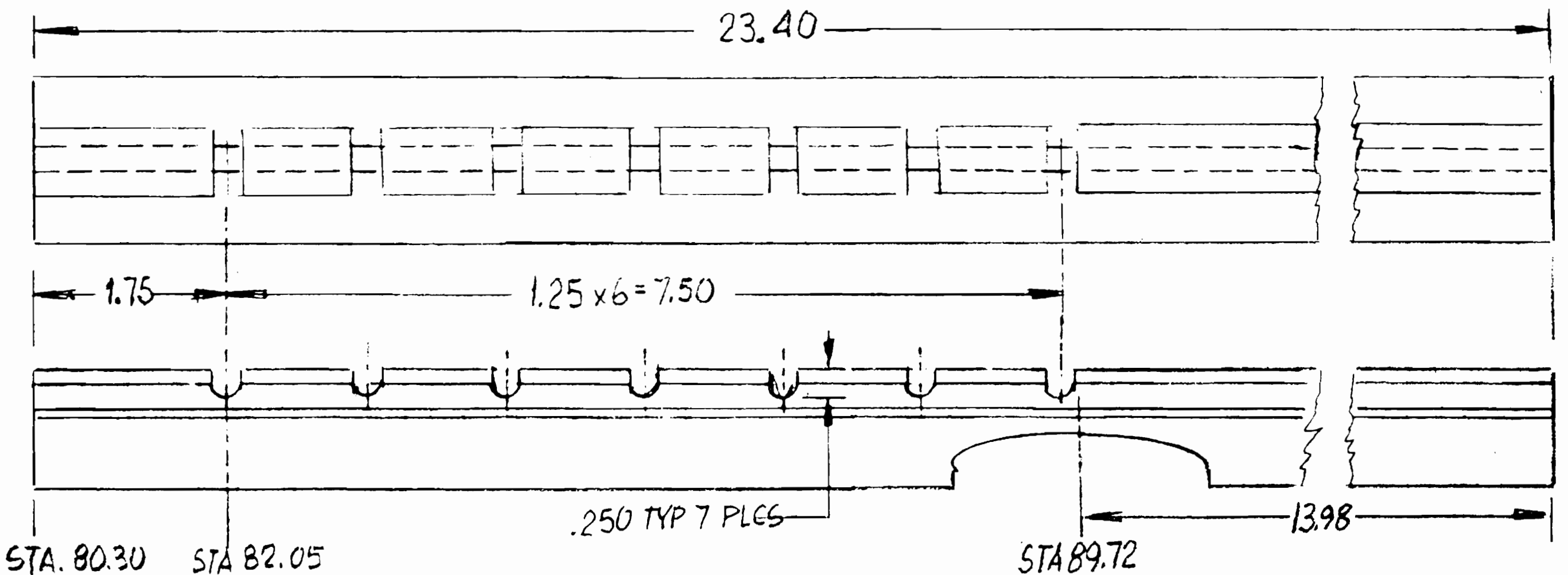
DWG 9-50-002 -

B/M -25, -27 - CABLE 1/8" - 7x7 SHOULD BE 7x19

ZONE 5-D - 254-27. CABLE 1/8" - 7x7 SHOULD BE 7x19



DWG 9-30-009 - ZONE 6-B. CHANGE DIMENS

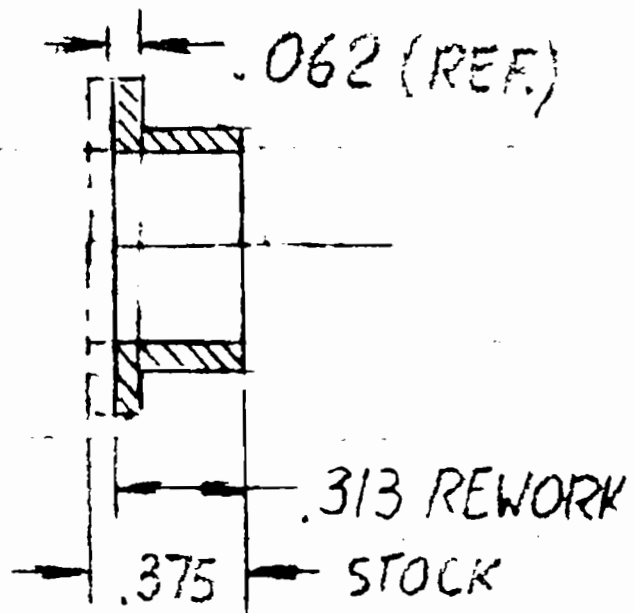


DETAIL OF MACHINING OF SEAT RAIL EXTRUSION - 23

DWG 9-30-004 - ZONE 1-C

PREPARED	NAME L. Pazmany	Nov-1994	PAZMANY AIRCRAFT CORPORATION — SAN DIEGO — CALIFORNIA —	MODEL NO.	PL-9
CHECKED			ENGINEERING CHANGE NOTICE 1	REPORT NO.	
APPROVED				PAGE NO.	5

DWG 9-50-004 - ZONE 2-C. ADD REWORK OF FLANGED BEARING FL50-3



ZONE 5-C. IDENTIFY -15 SPROCKET SHOWN THREADED AT THE OUTB END OF -5 SCREW JACK

ZONE 7-D. AD DASH NO. TO BEARING P.N. MS 20218-1

DWG 9-40-001 - ZONE 1-A - B/M - AD MATERIAL: SUGAR MAPLE - (WHITE).

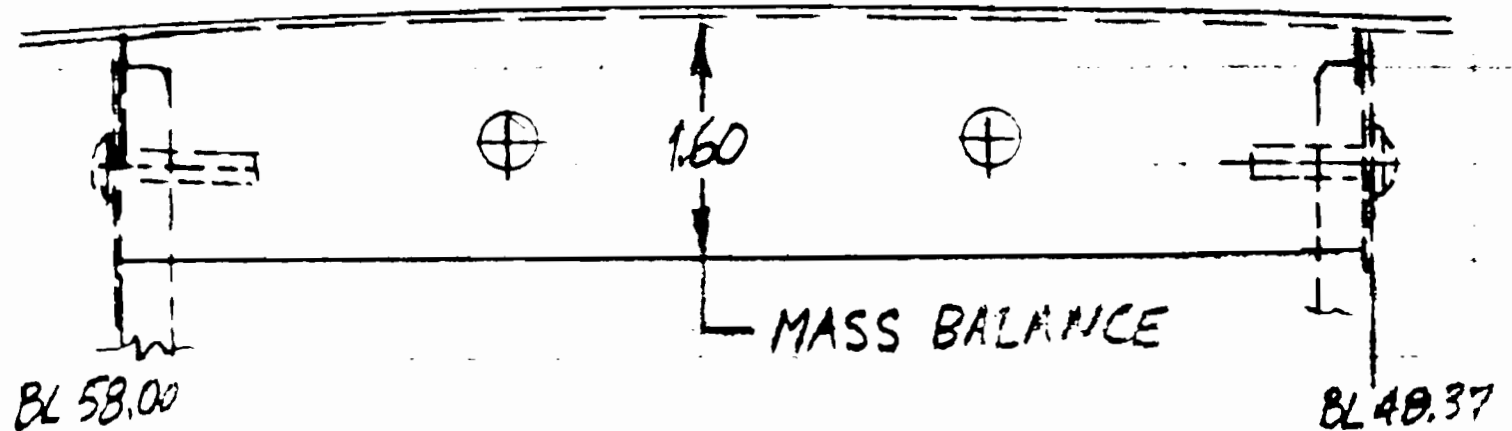
DWG 9-10-004 - ZONE 2-B. B/M. CHANGE QUANTITIES AS FOLLOWS:

BOLT AN4-12 - QTY 3 & 3. WASHER AN960-416 - QTY 9 & 9. NUT AN364-428. QTY 3 & 3

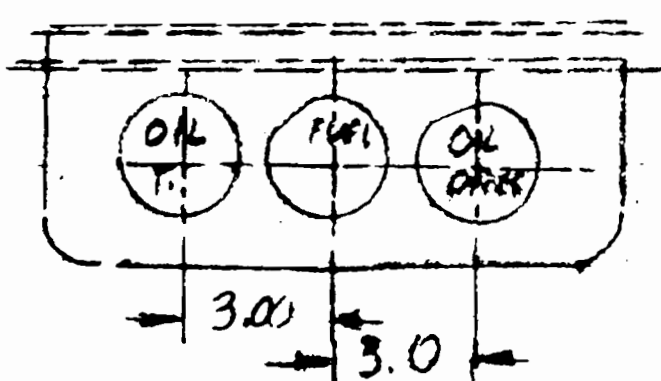
DWG 9-30-002 - ZONE 4-B AND 4-A. ADDED 1/2" OD TUBES FOR SUPPORTING BATTERY RACK. DETAILS OF THESE TUBES ARE SHOWN IN DWG. 9-70-002. FOR LACK OF SPACE IN 9-30-002

DWG 9-20-005 - ZONE 8-D.

INCREASE THE WEIGHT OF THE MASS BALANCE FROM 5.2 LB TO 6.1 LB.



DWG 9-30-009 - ZONE 3-A - INSTRUMENT PANEL.



MOVED FUEL QUANTITY - DUAL INSTRUMENT FROM THE LEFT PANEL TO & PANEL

DWG 9-20-007 - ZONE 4-B

(-43) RIB AT BL 58.00 (R&L) SHOULD BE:

(-49) RIB AT BL 65.00 (R&L)

DWG 9-50-004 - ZONE 2-A & 3-B

INCREASE SIZE OF KNOB -33 AND SPACER -27

